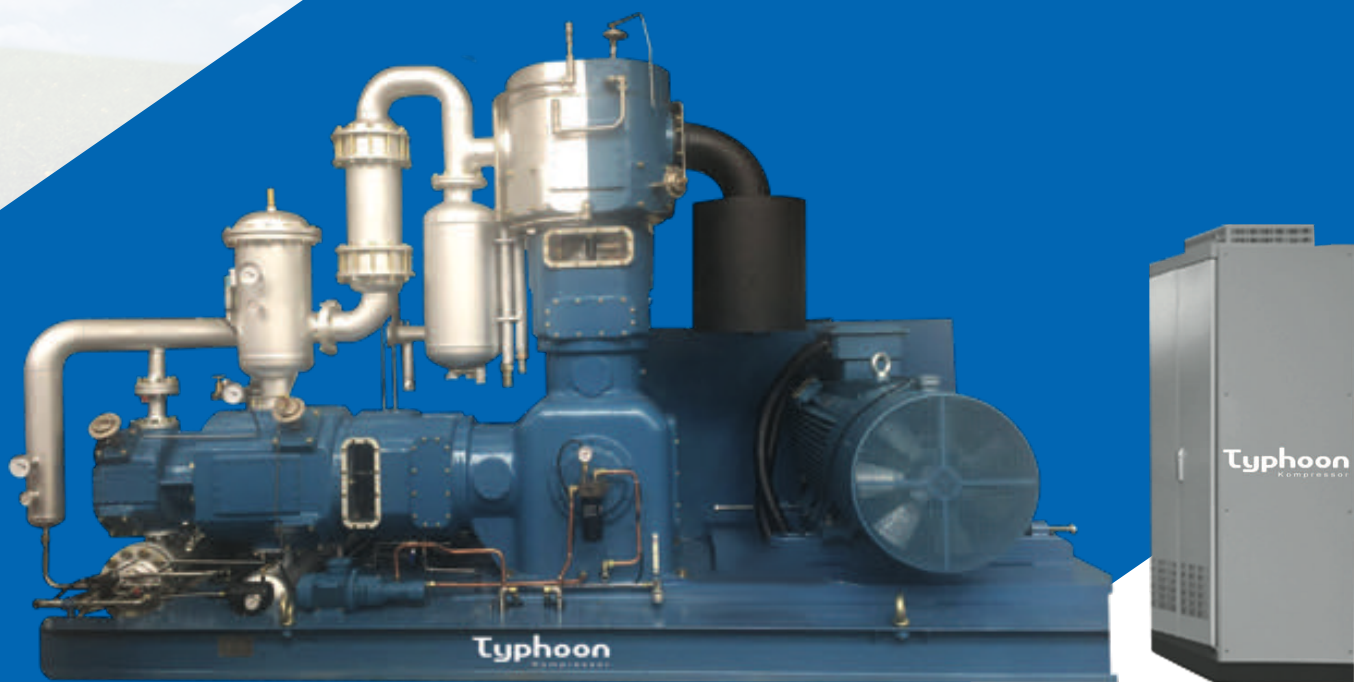


Typhoon

Kompressor



Free Consultation: 0989 508 177 - hopnhatvn.com

OIL-FREE PET 40 BAR AIR COMPRESSOR

RELIABILITY ◆

DURABILITY ◆

EFFICIENCY ◆



TYPHOON CUSTOMER SERVICE ORGANIZATION OFFERS THE BEST LIFE CYCLE MANAGEMENT FOR YOUR PET APPLICATION, FROM THE SIMPLE SUPPLY OF PARTS AND LABOR, TO A VARIETY OF UPGRADES TO KEEP YOUR EXISTING TYPHOON COMPRESSOR PERFORMING AT OPTIMUM RUNNING CONDITIONS. ALL-IN MAINTENANCE CONTRACTS WITH UNLIMITED WARRANTY EXTENSION ARE ALSO AVAILABLE.

  **TECHNICAL SUPPORT** to ensure ease of installation.



   **START-UP & TRAINING** by Typhoon factory trained technicians.

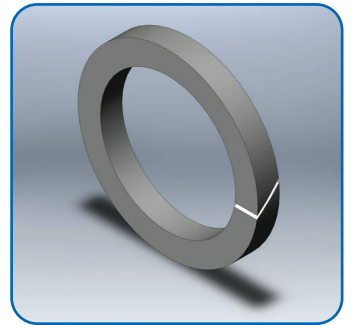
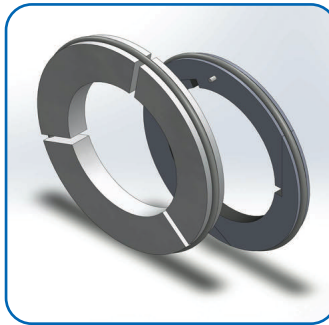
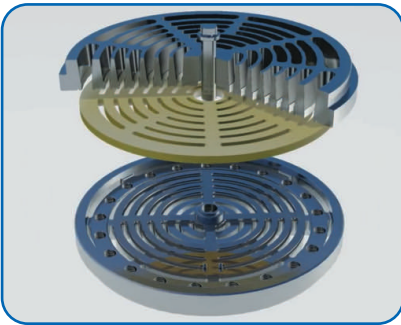
   **SPARE PARTS AND LABOR:**

Parts availability throughout the world.

Technical assistance: Inhouse or on-site.




Valve replacement and refurbishment program.

  **MAINTENANCE INTERVENTIONS** to satisfy your specific needs; From time and material service calls to ALL IN maintenance contracts with extended warranty.



 **TRAINING PROGRAMS** to provide a higher level of expertise to client's in-house personnel.

  **PREVENTATIVE MAINTENANCE PROGRAMS**

   **COMPLETE AUDITS:** mechanical, energy savings, maintenance program, intervention planning.

◆ **Upgrades to optimize performance and efficiency;** Improved cylinders, air back recycling system, heat recovery system.

◆ **Optional components and accessories** to meet the specific needs of your project including closed loop cooling systems, sound canopy, sub-micron & carbon filtration, air dryers, and heat recovery



BENEFITS & FEATURES

Options configuration.

- ◆ Wide range of pet compressors or Low pressure & booster combination

Highest cost performance.

- ◆ Low installation & maintenance cost Low energy costs

Worldwide service network.

Global solutions:

- ◆ Variable speed intelligent software

Worldwide technical support

- ◆ Global operating conditions
- ◆ Shared are parts & technical services

Extended warranty program



CONTROL CABINET

Features

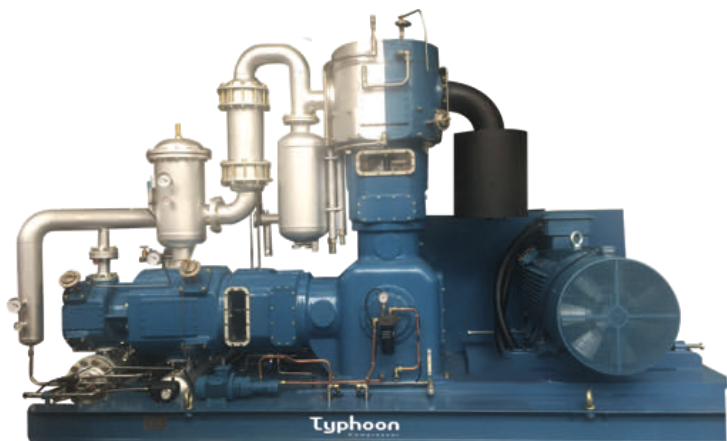
- ◆ Built-in SIEMENS HMI touch panel display & SIEMENS PLC to control and monitor operating status

Advantage

- ◆ User friendly monitoring system, integrated schedule maintenance, inter-stage pressure & temperature, cooling water and lubricating pressure, alarm and shutdown protection

IOT network (option)

Variable Frequency Drive (option)



COMPRESSOR PACKAGE

Features

- ◆ Complete skit mounted
- ◆ Reliable cooling system with stainless steel tube & fittings.
- ◆ Zero loss condensate drain.
- ◆ Omdependent oil pump for prelubrication.

Advantage

- ◆ Simple installation.
- ◆ Easy access ease of maintenance.
- ◆ Minimized leakage & losses.



PIPING

- ◆ Minimum number of components and welds
- ◆ Better rigidity
- ◆ Low speed of air in pipes
- ◆ Internal anti corrosive treatment



WEIGHT

- ◆ Simplified metal structures and piping
- ◆ Reduced transport and packaging costs
- ◆ Easy repositioning in case of revised installation layout



HEAT EXCHANGERS

- ◆ Customized heat exchangers for each specific application
- ◆ High heat exchange efficiency



CONDENSATE SEPARATORS

- ◆ Gravity (and not cyclonic) separation process
- ◆ Reliable and efficient internal anti-corrosive treatment



FLUID DYNAMICS

- ◆ Full-port suction and delivery valves
- ◆ Ducts inside cylinders specifically designed to eliminate pressure losses



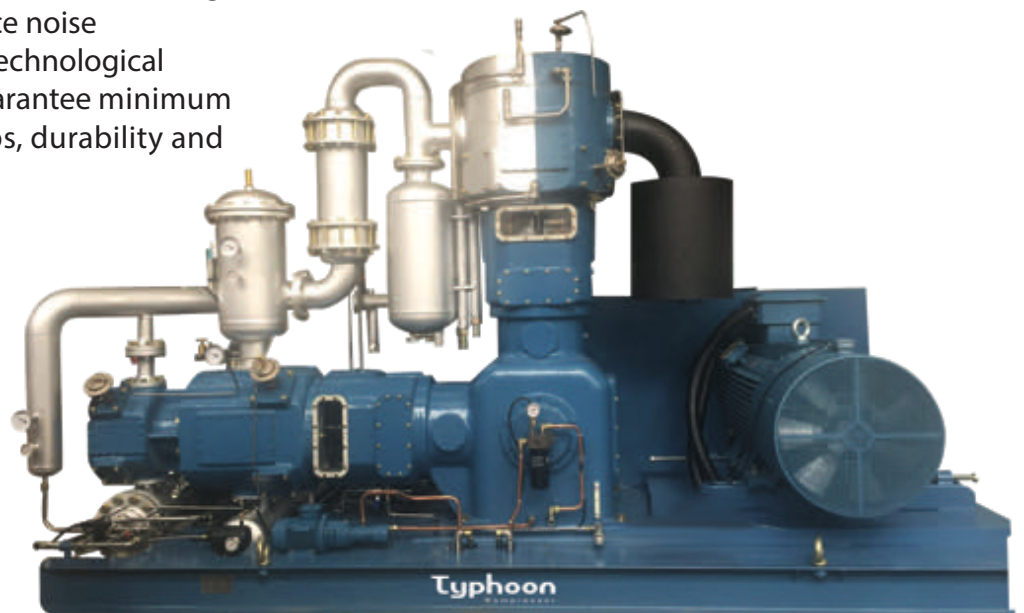
MECHANICAL VIBRATION

- ◆ Optimized distribution of static weights and dynamic loads
- ◆ Reduction of moving masses



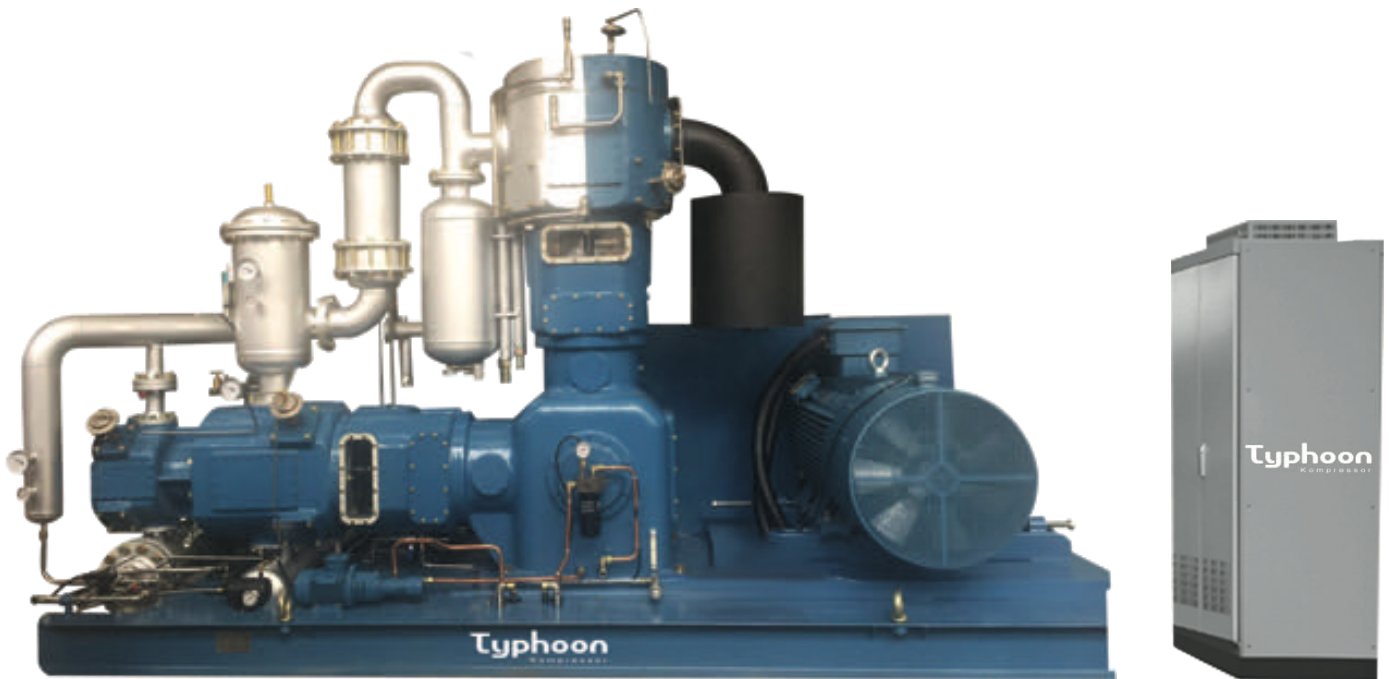
SUCTION FILTER

- ◆ Provided with a silencing stage to reduce noise
- ◆ With nanotechnological coating to guarantee minimum pressure drops, durability and easy cleaning



MATERIALS CERTIFIED IN ACCORDANCE WITH THE ASME, EAC, GB, and ISO STANDARDS

MODEL: TLW-22/40



TECHNICAL PARAMETERS:

Model	Delivery m3/min	WP Bar	Power Kw	Speed r.p.m	Dimension (LxWxH) mm	Weight kg
TLW-8.5/40	8.5	40	90	450	4050x1750x2380	5500
TLW-10/40	10	40	110	500	4050x1750x2380	5800
TLW-12/40	12	40	132	580	4050x1750x2380	6000
TLW-16/40	16	40	160	390	4650x2200x2780	7400
TLW-18/40	18	40	185	440	4650x2200x2780	7600
TLW-20/40	20	40	200	470	4650x2200x2780	7800
TLW-22/40	22	40	220	500	4650x2200x2780	8000
TLW-25/40	25	40	250	390	4950x2690x2980	8500
TLW-28/40	28	40	280	440	4950x2690x2980	8800
TLW-30/40	30	40	315	470	4950x2690x2980	9000

W TYPE OF MEDIUM-HIGH PRESSURE OIL-FREE AIR COMPRESSOR

◆ Low speed: starting from 355 to 460 rpm reduce wear. • long stroke: 10 to 30% more than similar industries

- ◆ Low piston load: smaller piston diameter, reduce load on components
- ◆ Low discharge temperature: operate temperature within 90°C-130°C improved reliability
- ◆ Improved compression: additional 1 to 3 ring to reduce compression leakage
- ◆ Low vibration: precision balance inertia force and torque to achieved dynamic balance
- ◆ High volumatic efficiency: achieved isobaric condition with equal

Pressure ratio on each stage

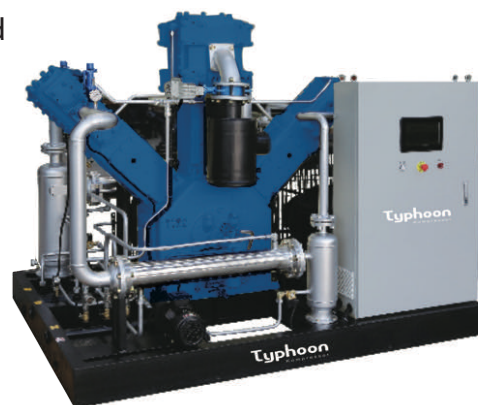
◆ Compression design: 3-stages with double acting on stage one and

Combination single acting on stage two & three

◆ High efficient cooler: providing compression cycle closed to isothermal condition, reduces energy loss.

TECHNICAL PARAMETERS:

Model	Delivery m3/min	WP Bar	Power Kw	Speed r.p.m	Dimension (LxWxH) mm	Weight kg
WW-5/40	5	40	55	600	2330x1700x1900	2500
WW-9/40	9	40	110	600	2530x1900x1900	3200



TYPE OF MEDIUM-HIGH PRESSURE OIL-FREE AIR COMPRESSOR

- ◆ Wear resistant cylinder sleeve, harden and finished for reliability
- ◆ Heavy duty piston rings, material composite ptfе with copper and carbon
- ◆ Piston rod sensor, monitoring piston rings condition water cooled packing box improved cooling and prolong packing seal hard chrome, polished piston rod reduce friction and reduce packing wear low piston speed reduce piston rings wear
- ◆ Silence compression valves with non-rupture peek valve seat
- ◆ Force lubrication main bearing improve bearing service life.
- ◆ Dual oil injection eliminate connecting rod oil channel, improve rod strength
- ◆ Reliable aluminum-magnesium alloy crankshaft bush bearing
- ◆ Distant-piece design with oil-scaper rings to ensure 100% oil-free air quality air recovery system
- ◆ Easy access for maintenance, reduce service downtime
- ◆ Stainless steel pipes and tubing eliminate rust for reliable operation

TECHNICAL PARAMETERS:

Model	Delivery m3/min	WP Bar	Power Kw	Speed r.p.m	Dimension (LxWxH) mm	Weight kg
VW-3/40	3	40	37	600	2330x1700x1600	2100
VW-6/40	6	40	75	600	2330x1700x1600	2600



Countrywide branch office and parts warehouses to provided quality and timely service. Ofure service engineer available 24 hour 7 day on worldwide technical service support.

Worldwide 40 Bar PET oil-free air compressor

- ◆ Provide 24 hour on call service. ◆ On-site training and commissioning.
- ◆ Complete range of parts inventory. ◆ Turnkey installation service.
- ◆ Scheduled maintenance program.

